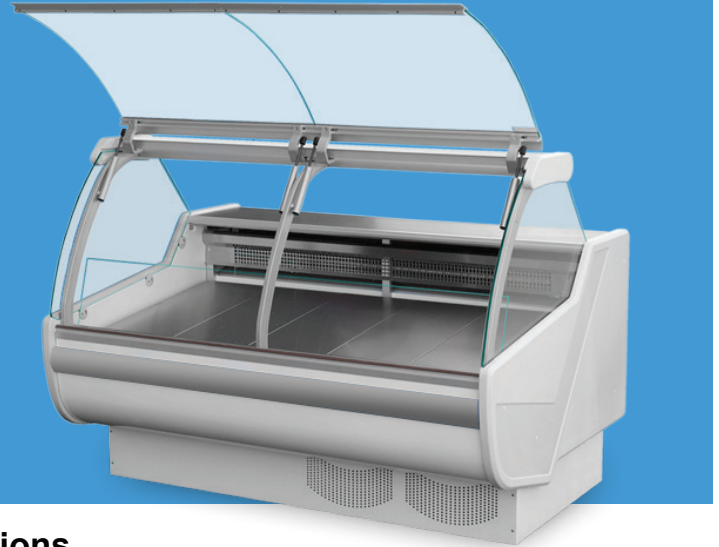


DC-SAND

Curved Glass, Self Contained

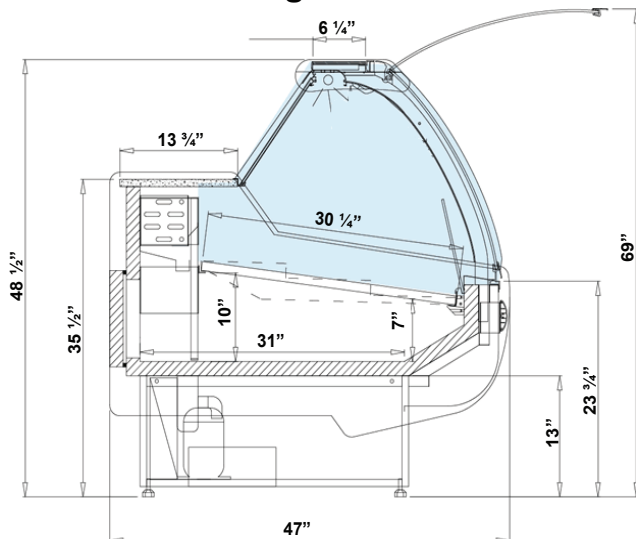
REFRIGERATED
DELI/MEAT/CHEESE/SALAD CASE
W/ LIFT-UP CURVED FRONT GLASS



Standard Features

- Internal cooling aggregate
- Static cooling
- External housing made of white coated steel (from the stuff side)
- Base and front panel made of white coated steel
- Ecological polyurethane foam insulation
- Display area made of stainless steel
- Storage chamber made of stainless steel
- Storage chamber back doors - hinged
- Grey granite worktop (thickness 20 mm)
- Curved front glass - telescopic lifting system
- Night screens made of plexi glass
- Lamp with LED light
- Device leveling legs
- Automatic defrost system
- Condenser outlet to container
- Flat insert

Technical Drawing



***All equipment are designed to operate in a controlled environment below 75°F (+24°C) temperature and HR 55% relative humidity.

Options

- Remote compressor
- Stainless steel base and front
- Possibility of multiplexing
- Corner units available
- Fresh seafood display case (Model:SANFIDID) available
- Variety of finished colours
- Steps insert

Metal element colours

- Black, White or Stainless Steel
- Other colors available upon request

Dimensions

Model	Dimension W x D x H	Weight (lbs / kg)
DC-SAND-4	54" x 47" x 48 1/2"	364 / 165
DC-SAND-6	78 3/4" x 47" x 48 1/2"	485 / 220
DC-SAND-8	100" x 47" x 48 1/2"	650 / 295
DC-SAND12	150 3/4" x 47" x 48 1/2"	

Voltage

- DC-SAND-3~8 : 115V | 1ph | 60 Hz | 8A, max. fuse: 15A

* Customizable options available

*Multiple sizes available

* Specifications are subject to change without notice.

**All measurements are approximates.